

# The HAMMETT



1701 SQ.FT.



3-5 BEDROOMS



2.5 BATHROOMS

22'

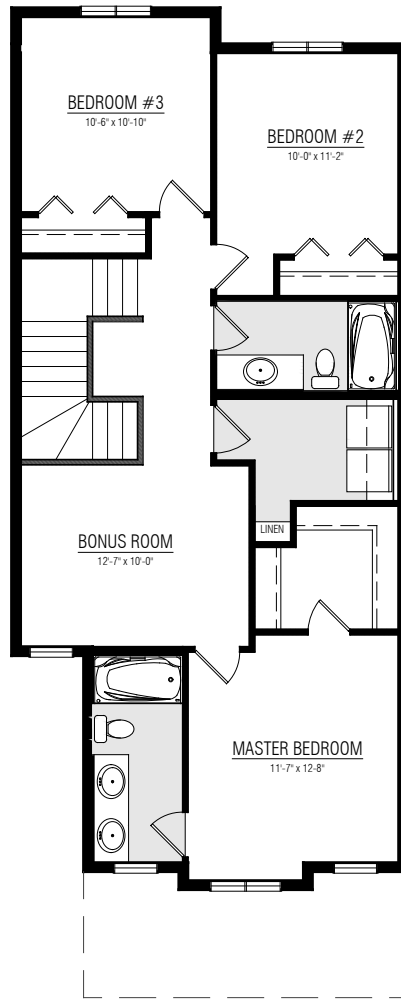
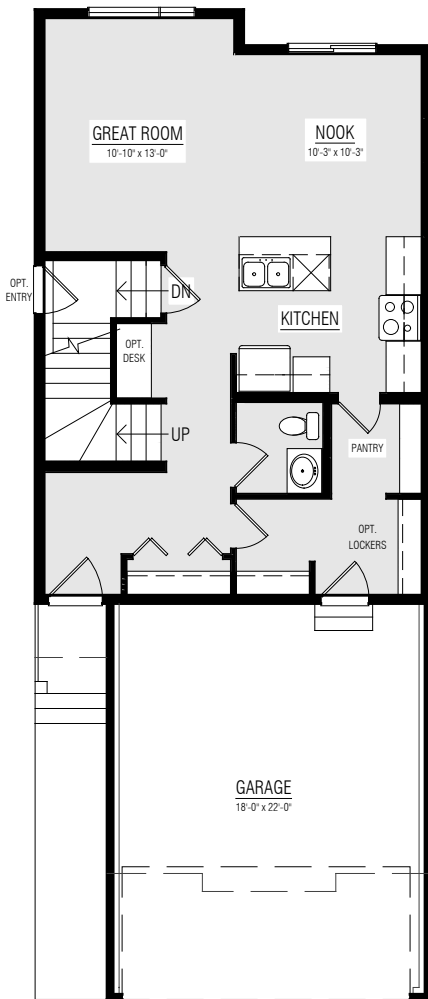


COLONIAL

## MAIN FLOOR 706 SQ.FT.

## UPPER FLOOR 995 SQ.FT.

## OTHER ELEVATIONS



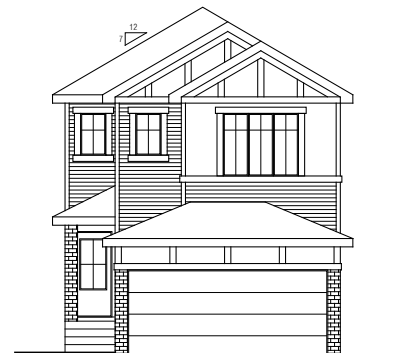
### CRAFTSMAN



### TRADITIONAL FARMHOUSE



### TUDOR



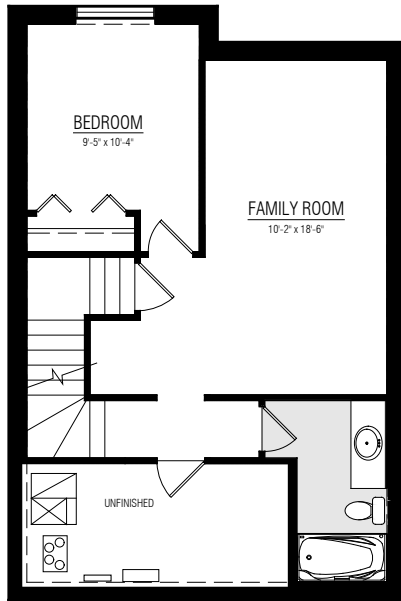
**LINCOLNBERG**  
MASTER BUILDER



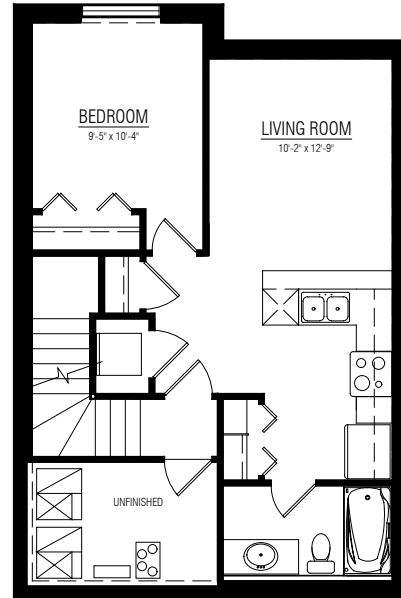
Copyright © Lincolnberg Master Builder, 2020. Revised April 11, 2024 8:57 AM. This plan is the property of Lincolnberg Master Builder. Floorplans, specifications and dimensions shown are approximate, and are subject to change without notice. All rights reserved, including the right to reproduction in whole or in part. Rendering(s) are artist concept only. E. & O.E.

# HAMMETT OPTIONS

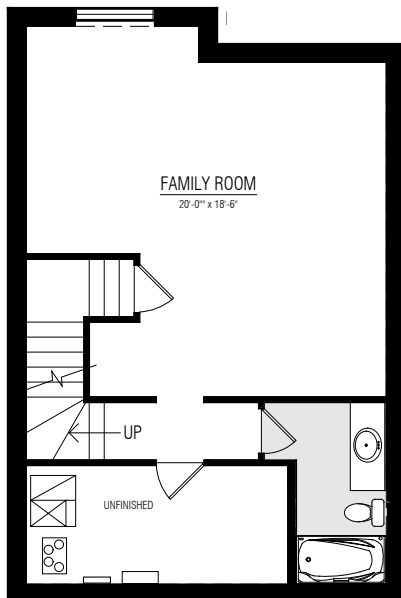
**BASEMENT DEVELOPMENT**  
531 SQ.FT.



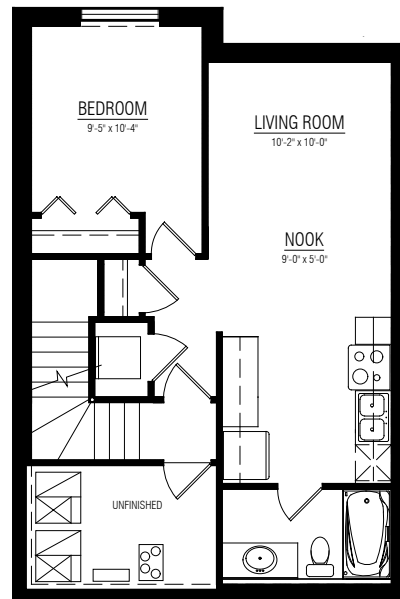
**BASEMENT SUITE DEVELOPMENT**  
560 SQ.FT.



531 SQ.FT.



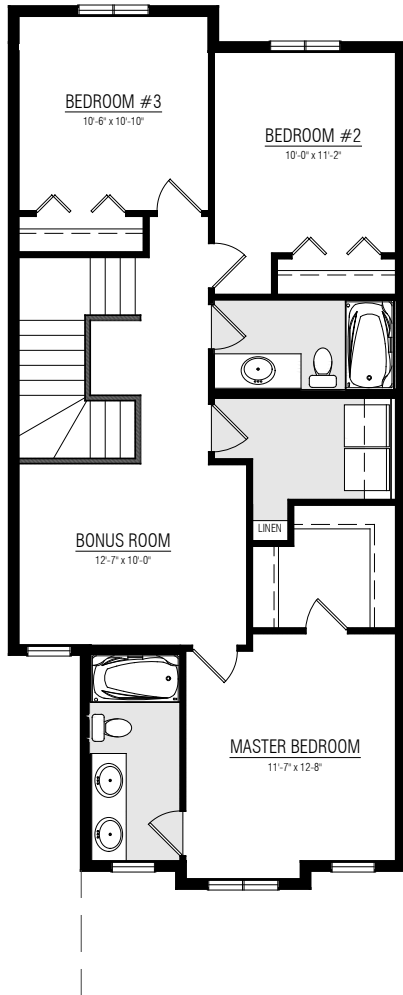
**GALLEY KITCHEN OPTION - 560 SQ.FT.**



# HAMMETT OPTIONS

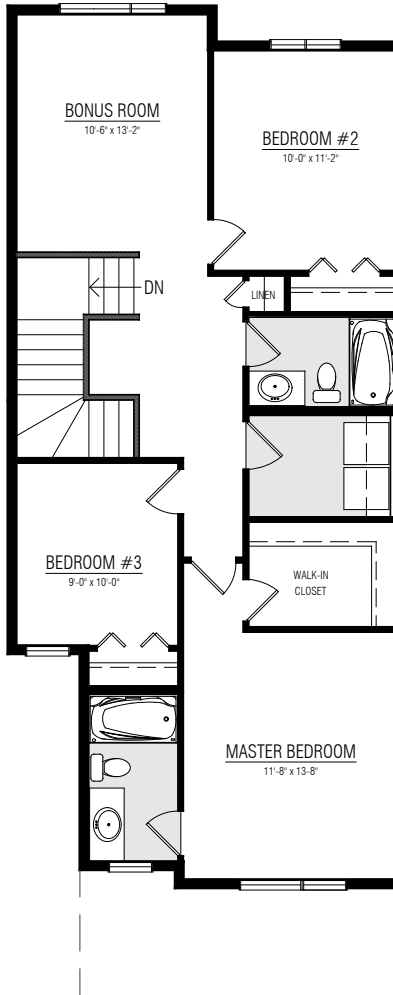
## UPPER FLOOR 995 SQ.FT.

### STANDARD

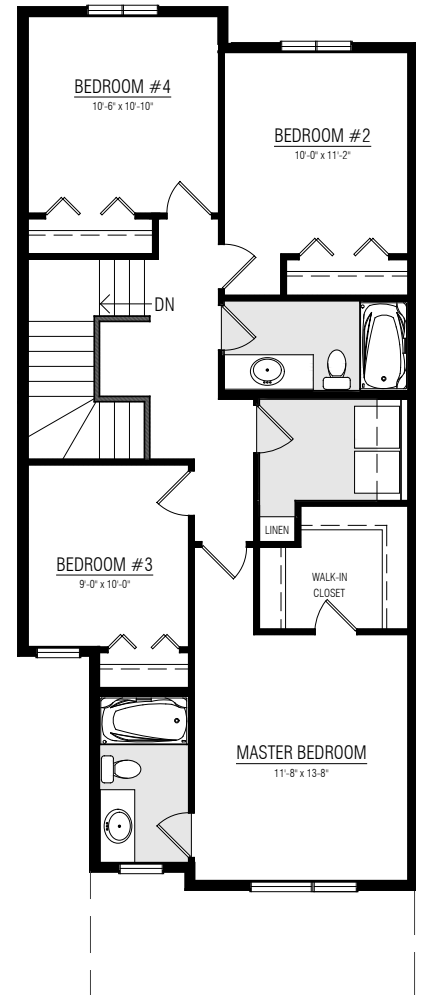


## UPPER FLOOR OPTIONS

### REAR FACING BONUS ROOM 1000 SQ. FT.



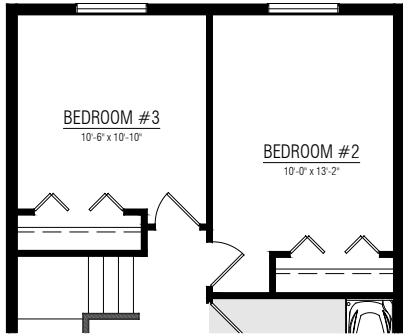
### 4 BEDROOM OPTION 1000 SQ. FT.



# HAMMETT OPTIONS

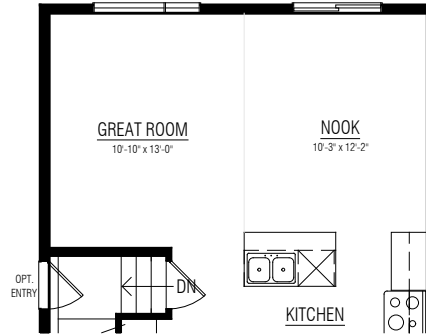
## UPPER FLOOR OPTION

BEDROOM 2 + 40 SQ. FT.



## MAIN FLOOR OPTIONS

NOOK + 40 SQ. FT.



L-SHAPED PENINSULA

